

AGENDA

Meeting: MELKSHAM AREA BOARD
Place: Melksham Assembly Hall, Market Place, Melksham
Date: Wednesday 15 June 2016
Time: 7.00 pm

Including the Parishes of Atworth, Broughton Gifford, Melksham, Melksham Without, Steeple Ashton, Bulkington, Keevil, Great Hinton, Poulshot, Semington and Seend

The Area Board welcomes and invites contributions from members of the public. The chairman will try to ensure that everyone who wishes to speak will have the opportunity to do so.

If you have any requirements that would make your attendance at the meeting easier, please contact your Democratic Services Officer.

Refreshments and networking opportunities will be available from 6:30pm.

Please direct any enquiries on this Agenda to Kevin Fielding (Democratic Services Officer), on 01249706612 or email kevin.fielding@wiltshire.gov.uk

or Rhys Schell (Melksham Community Engagement Manager) direct line 01225 716752 or rhys.schell@wiltshire.gov.uk

All the papers connected with this meeting are available on the Council's website at www.wiltshire.gov.uk

Press enquiries to Communications on direct lines (01225) 713114 / 713115.

Wiltshire Councillors

Cllr Jonathon Seed (Chairman) -
Summerham & Seend

Cllr Pat Aves - Melksham North

Cllr Terry Chivers – Melksham Without North

Cllr Jon Hubbard - Melksham South

Cllr David Pollitt - Melksham Central

Cllr Roy While – Melksham Without
South

RECORDING AND BROADCASTING NOTIFICATION

Wiltshire Council may record this meeting for live and/or subsequent broadcast on the Council's website at <http://www.wiltshire.public-i.tv>. At the start of the meeting, the Chairman will confirm if all or part of the meeting is being recorded. The images and sound recordings may also be used for training purposes within the Council.

By entering the meeting room you are consenting to being recorded and to the use of those images and recordings for broadcasting and/or training purposes.

The meeting may also be recorded by the press or members of the public.

Any person or organisation choosing to film, record or broadcast any meeting of the Council, its Cabinet or committees is responsible for any claims or other liability resulting from them so doing and by choosing to film, record or broadcast proceedings they accept that they are required to indemnify the Council, its members and officers in relation to any such claims or liabilities.

Details of the Council's Guidance on the Recording and Webcasting of Meetings is available on the Council's website along with this agenda and available on request.

If you have any queries please contact Democratic Services using the contact details above.

Items to be considered	Time
<p>1 Election of Chairman</p> <p>To elect a Chairman for the forthcoming year.</p>	5 mins
<p>2 Chairman's Welcome</p>	
<p>3 Election of the Vice Chairman and Appointments to Outside Bodies and Working Groups</p> <p>To elect a Vice Chairman for the forthcoming year.</p> <p>To note that appointments to outside bodies and working groups for the forthcoming year:</p> <ul style="list-style-type: none"> • Community Area Transport Group (CAT-G) • Melksham Community Area Partnership • Local Youth Network (LYN) • Melksham Campus Advisory Board • Melksham Neighbourhood Plan 	5 mins
<p>4 Chairman's Announcements (<i>Pages 1 - 12</i>)</p> <p>Announcements:</p> <ul style="list-style-type: none"> • Carers in Wiltshire Joint Strategy 2016-2020 • Help Melksham win the Road to Rio • Meet the Funder event – 22 June 2016 • Groundwork and Tesco “Bags of Help” funding • Adult Care Charging Policy Consultation • Church Street - no right turn 	5 mins

5	Apologies for Absence	
6	Minutes (<i>Pages 13 - 26</i>) To confirm the minutes of the meeting held on Wednesday 13 April 2016.	
7	Declarations of Interest To receive any declarations of disclosable interests or dispensations granted by the Standards Committee.	
8	Update and Reports <ul style="list-style-type: none"> • Children and Young people including Local Youth Network (LYN) • Health and Wellbeing • Business and Economy • Community Area Transport Group (CATG) • Read Easy 	10 mins
9	Melksham Campus/Market Place regeneration Laurie Bell - Associate Director, Wiltshire Council.	10 mins
10	Wilts and Berks canal - Melksham Link Paul Lenaerts - Project Manager, Wilts & Berks Canal Trust.	15 mins
11	Melksham Football Club - Planning for the future Dave Wiltshire - Melksham Town FC Chairman.	20 mins
12	Melksham Rugby Club - Planning for the future Pat Holtam - Melksham RFC Chairman and Scott Simmons - Melksham RFC.	10 mins

13	<p>Written Partner Updates (<i>Pages 27 - 28</i>)</p> <p>To receive any written updates from the following partners:</p> <ul style="list-style-type: none"> • Community Area Partnership • Wiltshire Police • Wiltshire Police and Crime Commissioner • Wiltshire Fire and Rescue Service • NHS Wiltshire/Clinical Commissioning Group • Healthwatch Wiltshire • Melksham Town Council • Parish Council Nominated Representatives • Melksham Chambers of Commerce • Melksham Senior People’s Forum • Older Persons Champion • Trans Wilts Cic 	10 mins
14	<p>Grant Funding (<i>Pages 29 - 58</i>)</p> <p>The Area Board members are asked to consider seven applications to the Community Area Grants scheme:</p> <ul style="list-style-type: none"> • Bowerhill Village Hall Trust requesting £1326.00 for Bowerhill Village Hall projector and sound system. • Riverside Club requesting £2600.00 for Renewal of heating system at Riverside Club. • The Wiltshire School of Gymnastics requesting £2929.00 for Wiltshire School of Gymnastics Training Aids and Vinyl Flooring. • Devizes and District Opportunity Centre requesting £1500.00 for Outdoor play shelter. • Golden Fleece Cricket Club requesting £500.00 for GFCC outdoor seating area. • Melksham Skills Centre requesting £865.40 for Melksham Skills Centre safe play. • Wiltshire Mind requesting £300.00 for a new laptop. 	20 mins
15	<p>Any Other Items of Public Concern</p>	
16	<p>Close</p>	

Chairman's Announcements

Subject:	Carers in Wiltshire: Joint Strategy 2016 - 2020
Officer Contact Details:	Karen Walters, Community Commissioner (Carers)
Weblink:	http://consult.wiltshire.gov.uk/portal

Wiltshire Council and NHS Wiltshire Clinical Commissioning Group, in consultation with their other strategic partners (especially Carer Support Wiltshire, Wiltshire Parent Carer Council and Spurgeons) and over 50 carers have developed a new strategy for carers. The draft document is now available for the public to view and comment on before being finalised. It can be viewed in full on the council's consultations webpage:

<http://consult.wiltshire.gov.uk/portal>

Information postcards and leaflets are also available at this meeting.

Publicity materials can be provided from Karen Walters, Wiltshire Council, for any partners who would be willing to support spreading the message or if you would like to invite her to attend any local carer groups or meetings during the consultation period.

Please feedback comments by **13 July 2016** to: Karen Walters, Community Commissioner (Carers) at:

Address: County Hall, Bythesea Road, Trowbridge BA14 8JN

Email: Karen.walters@wiltshire.gov.uk

Mobile: 07876 393890

Who do we mean when we talk about carers?

Anyone can become a carer. A carer is someone of any age, including a child (young carer), who provides unpaid support to a family member or friend who could not always manage without this help. This could be caring for a relative (a parent, grandparent, sibling, child, spouse, partner) or friend who is ill, frail, disabled or who has mental health or substance misuse problems. They should not be confused with paid or volunteer support workers.

Most people are likely to be undertaking a caring role at some point in their lives, with many of us needing to access some form of information, advice and support during this difficult time.

Have we got things right in the new strategy?

We believe we have a strategy that is truly representative of the needs of Wiltshire carers. However, now is the time for you to have your say and influence the way services are commissioned over the next 4 years.

We invite members of the public, especially carers, to comment on this document to influence the future commissioning of support for carers in Wiltshire. We need you to tell us if we have got things right. We also want to

Chairman's Announcements

know if you, as a carer, feel represented within this strategy and if not, what is it you would like to see added or changed. What services do you currently access (if any) that you value and why they are important to you?

We invite organisations and business in Wiltshire to comment on the document and to inform us of any contributions they are already making or could make, in order to support the delivery of this strategy.

A detailed action plan will be developed once the strategy is finalised to support its delivery.

Why is this strategy needed?

A Carers UK press release on 12 November 2015 stated “Unpaid carers save the UK **£132 billion a year** – the cost of a second NHS.”¹

70% of the 47,608² carers living in Wiltshire continue to remain hidden and it is believed that many of these people will not be aware of their carer status. Accessible information and advice is therefore vital to ensure that these people know where to get help and support when they need it.

The Care Act places additional duties on social care services in assessing and addressing the needs of carers. Carers now have parity of esteem with those people they care for. We need to ensure that carers' of people with mental health issues are able to access appropriate services to meet their needs. There is a requirement for all health, social care and educational professionals to identify young carers and ensure their needs are being met and that they are not carrying out inappropriate caring roles.

The 2015 Healthwatch report “Unpaid Carers in Wiltshire: help in a crisis” highlights the need to review how we support carers in a crisis. Whilst early intervention and prevention measures is expected to reduce the likelihood of this point being reached, there will be unavoidable circumstances when a carer reaches crisis point and it is vital targeted support is available to help them when they reach this point.

Our shared vision for carers in Wiltshire:

Wiltshire cares for carers by ensuring that carers living in Wiltshire are identified and accepted as expert partners in care; are well informed; and maintain a good quality of life and healthy lifestyle outside of their caring responsibility.

To find out more please read the full strategy and / or contact Karen Walters direct.

¹ Valuing Carers 2015 – the rising value of carers' support Lisa Buckner (University of Leeds), Sue Yeandle (University of Sheffield)

² Census 2011

Chairman's Announcements

4 June to 29 July



Wiltshire's
BIG

PLEDGE

The Road to Rio

Are you ready to take the Road to Rio?

Sign up for **free** to one or more activity challenges.

Individuals or teams will take a virtual journey over eight weeks via previous Olympic/Paralympic host cities on the way to the venue for the 2016 Games – Rio de Janeiro!

The Big Pledge challenges

This year it's about getting active, achieving your goal, and having fun. Select your challenge and really go for gold!

Challenge	Bronze distance	Silver distance	Gold distance
Road to Rio Challenge (Actual distance London to Rio) (Team only)	3000km	7000km	9281km
Running Challenge (Individual)	50km	120km	200km
Cycling Challenge (Individual)	200km	400km	600km
Swimming Challenge (Individual)	20km	35km	50km
Walking Challenge (Individual)	150km	200km	300km
Junior Sports Challenge (Individuals 15 yrs and under)	80km	150km	200km
Ultimate Sports Challenge (Individual/Team)	800km	1500km	2016km

For more information and to register for **FREE** from 28 April 2016 go to: www.wiltshire.gov.uk/bigpledge

 [wiltshirebigpledge](https://www.facebook.com/wiltshirebigpledge)  [#BigPledge](https://twitter.com/BigPledge)



Take part as a team

There are two categories of this year's **Big Pledge** you can enter as a team: Road to Rio Challenge or Ultimate Sports Challenge.

Who can be a team?

- Businesses
- Schools
- Community groups
- Sports clubs
- Family
- Friends
- Any group of people!



How many can be on a team?

As many as you would like.



How do you sign up as a team?

Assign a team captain who will register the team online. Team members can sign up for their team, ready to get started on 4 June.

In addition to the individual and team goals, everyone that enters will contribute to their community's distance.

So whether it's on the roads, tracks and trails of Wiltshire, in the gym or pool, it's time to get active and have fun on the Road to Rio!

www.wiltshire.gov.uk/bigpledge

 [wiltshirebigpledge](https://www.facebook.com/wiltshirebigpledge)  [#BigPledge](https://twitter.com/BigPledge)

Chairman's Announcements

Subject:	Meet the Funder event 22 June 2016
Officer Contact Details:	Wiltshire Community Foundation info@wiltshirecf.org.uk
Weblink:	Event Brite- ticket purchase

Wiltshire Community Foundation is hosting a 'Meet the Funder' event for voluntary and community groups with speakers including The BIG Lottery and Power to Change with a range of workshops during the day about funding available and how to apply.

Date: Wednesday 22nd June 2016

Registration: 9:30am for start at 10am.

Venue: Devizes Corn Exchange

Cost: £8.50 per person with a light lunch provided

Finish: 3pm.

When you book, please select two workshops to attend – one in the morning and one in the afternoon:

AM

- Workshop A: Better Applications, Jane Butler, Wiltshire Community Foundation
- Workshop B: Crowdfunding, Globalgiving.com
- Workshop C: WASP Sports Funding

PM

- Workshop D: BIG Lottery Applications, Tim Temple
- Workshop E: Crowdfunding, Globalgiving.com
- Workshop F: Demonstrating Impact, Heidi Yorke

Chairman's Announcements

Subject:	Groundwork and Tesco 'Bags of Help' funding
Officer Contact Details:	Caroline McKenna Caroline.mckenna@groundwork.org.uk
Weblink:	http://www.groundwork.org.uk/Sites/tescocommunityscheme

Groundwork have partnered with Tesco to deliver a new community grants scheme. Last funding round there were many successful projects from across Wiltshire and we would like even more applications this round!

The Tesco Bags of Help scheme was launched in October 2015 and enables local community groups to apply for money to develop local resources and promote greener living and working. There are grants of £8,000, £10,000 and £12,000 available.

There are several rounds of applications throughout the programme and the first round of funding completed in February. Over 8 million Tesco customers voted across 2,500 stores nationwide for variety of community group projects, and from this nearly £13 million will be awarded to 1,284 community groups.

The second round of funding applications is now open and application process will be ongoing until 3rd June. To find out more, go to our website at <http://www.groundwork.org.uk/tescocommunityscheme>

As part of our work to promote the programme across the South West region, we would also be interested in any funding events we may be able to attend to provide information to prospective applicants, so if you have any relevant events or groups you think this may be applicable to, please get in touch.

Chairman's Announcements

Subject:	Adult Care Charging Policy Consultation
Officer Contact Details:	Olly Spence Community Commissioner olly.spence@wiltshire.gov.uk
Weblink:	http://www.wiltshire.gov.uk/news/articles/httpwwwwiltshiregovuknewsarticlescare-services-policies-consultation

Introduction-The Adult Care Community Commissioning team are currently leading on a public consultation regarding proposed changes to the adult care charging policy (i.e. how much people contribute to the cost of the social care services that they receive).

Unlike health services which are free at the point of access, adult social care support is means-tested in line with national guidelines. The proposed changes have been made in response to the Care Act (2014), to align Wiltshire's approach with that of other local authorities and to ensure the Council can continue to deliver sustainable care and support services.

The proposed changes will only impact on customers who contribute towards care services in their own home and will not impact on those contributing towards care in a permanent residential care setting.

The proposed Changes

- To take into account 100% of disposable income¹, the Council currently only takes into account 80% of disposable income.
- To take the full rate of attendance allowance into account when assessing how much people need to contribute. The Council currently only takes the lower rate into account even if the individual receives the higher amount.
- To update the list of allowable Disability Related Expenses (DRE). DRE items are things people have to spend money on as a result of a disability or illness and are disregarded when calculating how much people may have to contribute.

The Consultation Process-The consultation will run for three months and is scheduled to end on June the 6th. Customers who are likely to be affected by any

¹ Disposable income is the amount of money and individual has available after Household expenses, general living allowance and any disability related expenditures have been accounted for.

Chairman's Announcements

changes were contacted via letter to set out the proposals and encourage them to get involved. In addition to these individual letters a series of public meetings have been facilitated by Healthwatch Wiltshire.

How people can get involved- The consultation survey can be found on the Councils website

<http://www.wiltshire.gov.uk/news/articles/httpwwwwiltshiregovuknewsarticlescare-services-policies-consultation>

People can contact the Council or Healthwatch Wiltshire to request paper copies of the survey, pose individual questions or organise one to one meetings.

For more information please contact Olly Spence olly.spence@wiltshire.gov.uk

MINUTES

Meeting: MELKSHAM AREA BOARD
Place: Semington Village Hall, High Street, Semington
Date: 13 April 2016
Start Time: 7.00 pm
Finish Time: 9.15 pm

Please direct any enquiries on these minutes to:

Kevin Fielding (Democratic Services Officer), Tel: 01249 706612 or (e-mail) kevin.fielding@wiltshire.gov.uk

Papers available on the Council's website at www.wiltshire.gov.uk

In Attendance:

Wiltshire Councillors

Cllr Pat Aves, Cllr Terry Chivers, Cllr Jon Hubbard, Cllr David Pollitt, Cllr Jonathon Seed and Cllr Roy While

Wiltshire Council Officers

Rhys Schell – Community Area Manager
Kevin Fielding – Democratic Services Officer
Ceri Evans – Community Youth Officer
Phil McMullen - Area Board Community Project Support Officer

Town and Parish Councils

Keevil Parish Council – Myra Link
Melksham Town Council – Bruce Sanders
Melksham Without Parish Council – Mike Sankey & Paul Carter
Semington Parish Council – Paul Bowyer
Steeple Ashton – Geoff Hyatt

Partners

Wiltshire Police – Inspector Nick Mawson
Wiltshire Police & Crime Commissioner – Angus Macpherson
Dorset and Wiltshire Fire & Rescue Service – Darran Gunter
Melksham Community Partnership – Colin Goodhind

Total in attendance: 40



<u>Agenda Item No.</u>	<u>Summary of Issues Discussed and Decision</u>
1	<p><u>Chairman's Welcome, Introduction and Announcements</u></p> <p>The Chairman welcomed everyone to the meeting of the Area Board.</p> <p>Angus Macpherson – Wiltshire Police & Crime Commissioner and Darran Gunter – Chief Fire Officer, Dorset & Wiltshire Fire and Rescue Service were introduced.</p> <p>The following Chairman’s Announcement was noted:</p> <ul style="list-style-type: none"> • Local Highways Investment Fund 2014-2020.
2	<p><u>Apologies for Absence</u></p> <p>There was none.</p>
3	<p><u>Minutes</u></p> <p>Decision</p> <ul style="list-style-type: none"> • The minutes of the meeting held on Wednesday 24 February 2016 were agreed as the correct record.
4	<p><u>Declarations of Interest</u></p> <p>There was none.</p>
5	<p><u>Local Youth Network (LYN) - update and grant funding</u></p> <p>Ceri Evans – Community Youth Office and representatives of the Youth Management Group (Maisey and James) gave a brief update.</p> <p>Points made included:</p> <ul style="list-style-type: none"> • That twelve young people took part in the “Clean for the Queen” on the 12 March. • That young people had taken part in a “Sport Relief” event which challenged members of Melksham Police to take on the Canberra youth centre in several sports events. The event was supported by local businesses and was a great success.

- Future events – Party in the Park & River Festival.

The Chairman thanked Ceri Evans, Maisey and James for their update and thanked all the young people for attending the meeting.

6

Wiltshire and Dorset Fire and Rescue Service update

Darran Gunter - the new Chief Fire Officer, Dorset and Wiltshire Fire and Rescue Service gave a presentation on the progress of the new combined Fire Service and an update on the future role of the Service in working with partners to address those vulnerable in terms of safety, health and wellbeing.

A film was shown which outlined the combination of the new Dorset and Wiltshire Fire and Rescue Service.

Points made included:

- That both Dorset and Wiltshire Fire and Rescue Services faced significant funding pressures.
- That both services were not currently well funded.
- That by combining services, Dorset and Wiltshire would save around 6.5m.
- That a local chief officer would attend future Area Board meetings.

Questions raised from the floor included:

Would the new combined service re-introduce the co-responders scheme?

a. Yes, discussions were already underway with the Ambulance Service, with a view to looking at co-responding in the more rural areas.

That Melksham was well served by its local firecrews, with good response times to incidents.

The Chairman thanked Darran Gunter for his presentation.

7

Making Melksham a Dementia Friendly community

Sheila Ashley - Alzheimer's Support gave a presentation that outlined how Melksham could become a more Dementia Friendly community and showed a short film.

Points made included:

Why do we need Dementia Friendly Communities?

Dementia Report 2012

- 77% of people with dementia feel anxious or depressed.
- 67% do not always feel part of their community.
- 44% have lost friends since their diagnosis.

What is a Dementia Friendly Community?

- People with dementia feel supported to take part as fully as possible in everyday activities.
- A high proportion of people, including customer-facing staff, are dementia aware.
- There is recognition that what is good for people with dementia is good for everyone.

The Chairman thanked Sheila Ashley for a very thought provoking presentation.

8

Introducing your Melksham Health trainers

Laura Cunningham and Dave Payne – Health Trainers, Wiltshire Council gave a presentation that highlighted the work of the Wiltshire Council health trainers.

Points made included:

Why have health trainers?

- To tackle health inequalities.
- To help people take responsibility for their own health and well being.
- To be healthier for longer.
- To help people help themselves.

Helping adults to:

- Improve general well being.
- Build confidence and motivation.

- Eat healthily and be a healthy weight.
- Reduce or stop smoking.
- Be more active.
- Drink less alcohol.

Where do Health Trainers work?

- Libraries.
- Leisure centres.
- Children's centres.
- Some health centres.
- Community venues.

The Chairman thanked Laura Cunningham and Dave Payne for highlighting a very worthwhile initiative.

9

Wiltshire leisure services

Louise Cary – Head of Leisure Services, Wiltshire Council gave an update on local sport development and highlighted what was coming up at the local leisure centres.

Points made included:

Background

- Leisure Services integrated into Public Health – Feb 2014.
- Head of Service – Leisure Strategy.
- Head of Service – Leisure Operations.
- 23 Leisure Centres: 9 managed in-house
11 managed by Places for People Leisure Ltd
3 managed by community groups
- Sports Development and Community Infrastructure.
- Health and Physical Activity.
- Play and Open Spaces.

- Approx. 700 internal staff.

Leisure Services

Vision for Public Health and Leisure:

- Help people in Wiltshire to live longer, healthier lives, while addressing health inequalities.

Objectives:

- Contribute to health improvement and reduction in health inequalities.
- Increase participation in community sport and physical activity and reduce inactivity.
- Develop a strong sporting infrastructure to improve the health, well-being and skills of people and communities.
- Identify opportunities that will inspire people to take part in sport, active recreation and health related activities.
- Identify opportunities to increase the volunteering workforce.

Delivered through universal and targeted activities and services

- Reflects strategic documents and demonstrates Leisure's contribution to relevant aims and objectives.
- Sustainability of service – ability to deliver against cross-cutting themes/service areas.

Questions from the floor:

Could the Melksham Blue Pool remain open on bank holidays.

a. All Wiltshire Council Leisure centres were closed on bank holidays, historically foot fall had been low. If there was a need then Wiltshire Council would consider it.

The Chairman thanked Louise Cary for her presentation.

10

Healthy Schools project

Cllr Hubbard and Nick Bolton – Personal Education Adviser, Wiltshire Council

outlined a project which would make Melksham the first community area to have all schools engaged in the Wiltshire Healthy Schools Programme.

Points made included:

Background to project

In September 2015 public health specialists presented data to the Area Board on child poverty and childhood obesity.

- **Key findings for the Melksham community area:**

- 26.4% of children are obese/overweight in Reception Year
 - 29.9% of children are obese/ overweight in year 6

The Melksham Area Board wanted to take positive action on these figures, which were higher than the Wiltshire average.

Why Healthy Schools?

Following research and discussion, a project that provided support to the schools within the Melksham community area to participate in the Healthy Schools programme was proposed. The benefits of this approach are:

- A breakdown of barriers for schools to participate (currently 3 out of 12 in Melksham are engaged).
- It will engage with a very high percentage of the children within our community area.
- It will help schools to support one another to deliver best practice around a wide range of topics including healthy eating, physical and mental wellbeing.
- Melksham would be the first community area to have all schools working together on a healthy schools programme.

Project proposal

- To work in partnership with the twelve Melksham schools, facilitating two dedicated sessions for them with the healthy schools team.
- To enable schools to provide support to one another through funded school teacher time for sharing of best practices and collaborative working.

- To develop a local action plan for Melksham.

Decision

- **That the Melksham Area Board agrees to support the Healthy Schools Project.**

The Chairman thanked Cllr Hubbard and Nick Bolton for their presentation.

11

Health and Wellbeing funding for 2016/ 2017

Cllr Pat Aves

Health and Wellbeing funding for 2016/17

That devolved funding has been made available to Area Boards following the de-commissioning of the Good neighbours scheme which ended on 31st March.

Melksham Area Board is proposing to set up a group that would:

- Establish health and wellbeing priorities for the area.
- Use the funding to help isolated and vulnerable people within the community.
- Work collaboratively with older people, health organisations, town and parish councils and existing community groups.

Local Older Persons Network

If approved by the Area Board, the key actions would be to:

- Form the working group.
- Research and review local issues for vulnerable people using current data and input from professional groups and people.
- Establish key objectives and local priorities.
- Use funding to act on the objectives and local priorities.

The Chairman thanked Cllr Aves for outlining the proposals.

Your Area Board 2015/2016

Cllr Jonathon Seed and Rhys Schell – Community Engagement Manager highlighted the impact of the Melksham Area Board during 2015/16.

Points made included:

- During the 2015/16 period there have been 6 Area Board meetings, with an average attendance of 88 and a high of 160.
- Also delivered the Emergency Planning workshop in December 2015, very strong representation from the parishes and plans are started to be created.
- The Melksham Area Board has awarded 43 community grants this year with the allocated funding of £56,673. These grants have enabled community groups to undertake projects totalling £209,230.
- 10 new community transport related projects approved and funded by the CATG in partnership with the Area Board and Parish/ Town Councils.
- A few of the priorities:
 - Improvements to Zebra Crossing on Bath Road, Atworth
 - Melksham Kenilworth Estate – 20mph speed limit
 - Seend High St traffic management within narrow section (successfully bid for substantive funding to enable this project to take place)
- The CATG also successfully coordinated the installation of a school path at the new Forest and Sandridge School
- A Well established LYN management group with varied stakeholder representation.
- The Melksham LYN was one of the only groups across the county who deployed their full allocation of funding during 2015/16.
- Helped to provide support funding for Young Melksham, Melksham and Wiltshire Canoe Club, Bowerhill Scouts and Genshin Kai School of Martial Arts amongst others.
- The Melksham Area Board have worked closely with Wiltshire Council, partners and the community to agree the Market Place improvements and finalise the accommodation schedule for the Health and Wellbeing Centre.
- The new home for Melksham Football Club and Melksham Rugby Club at Woolmore Farm is due to be ready for August 2016.

	<ul style="list-style-type: none"> • Supported partners to engage with the Clean for the Queen campaign with over 100 volunteers taking part and more than 200 bags of litter collected. • Bowerhill and Hampton Park Business Initiative going from strength to strength and the 2nd newsletter to businesses set for release. • The Health and Wellbeing group continues to engage with local health <p>13 <u>Update on Grants awarded during 2015/16</u></p> <p>The Community Engagement Manager introduced Mike Rogers - AFC Melksham Disabled Football, Norman Drake – The Riverside Club, Melksham and John Cox – West Wilts Scout Group. All had received successful grant funding from the Melksham Area Board during 2015/16.</p> <p>14 <u>Community Area Transport Group (CAT-G) - update</u></p> <p>Cllr Roy While outlined the recommendations to the Melksham Area Board from the CAT-G meeting held on the 24 March 2016.</p> <p>Decision</p> <p>That the Melksham Area Board:</p> <ul style="list-style-type: none"> • Notes all updates from the minutes and issue closurers. • Issue 3715 Melksham Tower Rd, Devonshire PI shared use footpath link - agrees allocation of £1379.00 from CATG funds for topo survey. • Issue 4533 Request for funding of new batteries for SIDs –agrees allocation of £300 from CATG funds for SID batteries. <p>The Chairman thanked Cllr While for his update.</p> <p>15 <u>Champion Updates</u></p> <p>Children and Young Peoples Network - Cllr Jon Hubbard</p>
--	--

- Covered under the LYN update.

Economy – Cllr Roy While

- That the second edition of the Hampton Park Industrial Bulletin was shortly to be distributed.

Health and Wellbeing Network - Cllr Pat Aves

- That the group had met on Tuesday 12 April.

Transport - Cllr Terry Chivers

- Nothing to update at moment.

Read Easy Project - Cllr David Pollitt

- That the group had just held its first AGM, and now had ten trained coaches.

Older Persons Champion – Chris Pickett

- That Senior People’s Forum would be holding an open meeting on Monday 25 April at the Melksham United Church.

The Chairman thanked all members for their updates.

16

Written Partner Updates

Written updates from the following partners were noted:

- Melksham Community Area Partnership
- Wiltshire Police
- Melksham Town Council
- Melksham Without Parish Council

17

Grant Funding

The Wiltshire Councillors considered the following Grant Applications:

Beanacre & Melksham Cricket Club requesting £2,420 for BMCC Field Mower – application deferred.

Bowerhill Residents Action Group requesting £2,301.50 for Bowerhill Village Hall Projector and Sound System – application deferred.

Decision

West Wiltshire Model Railway Circle awarded £700 for Disabled Access Improvement.

Reason

The grant meets the 2016/17 grants criteria.

Decision

Banfield Recreation Trust awarded £542 for Banfield Recreation Ground.

Reason

The grant meets the 2016/17 grants criteria.

Decision

Semington Village Hall Management Committee awarded £1,500 for Semington Village Hall Kitchen Modernization Enlargement.

Reason

The grant meets the 2016/17 grants criteria.

Decision

Poulshot Cricket Club awarded £2,500 for Re-generation of Poulshot Cricket Pitch.

Reason

The grant meets the 2016/17 grants criteria.

Decision

Semington Parish Council awarded £530 for Semington Village Information Board Project.

Reason

The grant meets the 2016/17 grants criteria.

Decision

The Shed Melksham requesting £2,000 for the Shed Melksham - Purpose

18	<p>Built Premises. Reason <i>The grant meets the 2016/17 grants criteria.</i></p> <p><u>Councillor Initiative</u></p> <p>Decision Cllr Pat Aves and Cllr Jon Hubbard awarded £4,488 for Melksham Healthy Schools Project.</p>
19	<p><u>Any Other Items of Public Concern</u></p> <p>There was none.</p>
20	<p><u>Close</u></p>



Melksham Area Board Report

15th June 2016

1. Neighbourhood Policing

Sergeant:	Acting Sgt Kane Fulbrook-Smith
Town Centre:	PC Emily Thomas PCSO Rose Baldock PCSO Janet Gould
Rural North:	PC Barry Dalton PCSO Maggie Ledbury
Rural South:	PC Barry Dalton PCSO Helen Wilson

2. NPTs – Existing Priority (Cyber crime)

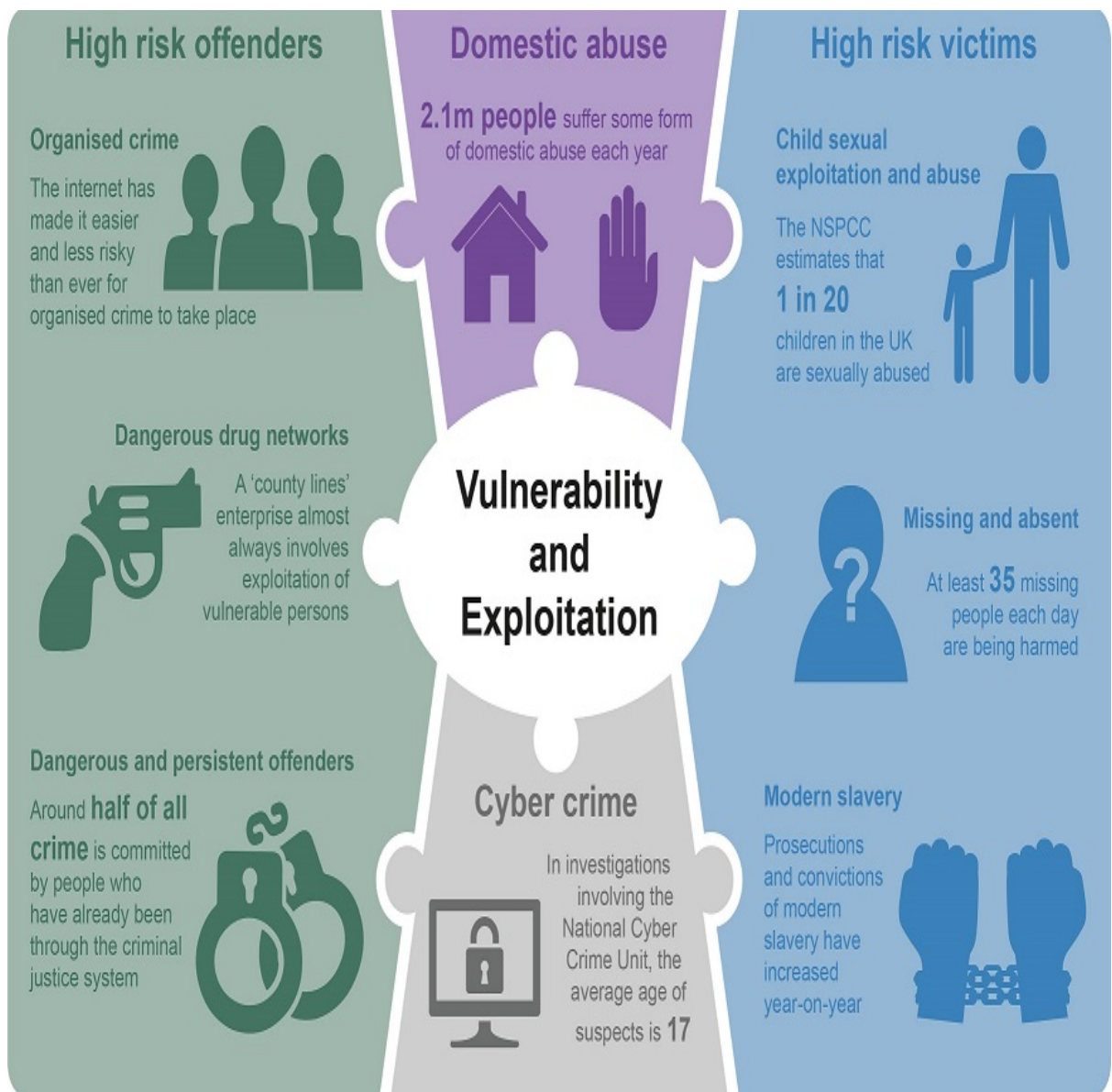
This Cybercrime priority was raised as part of our Force Control strategy 6 months ago. During this time Melksham NPT has raised the awareness with Local Infant Schools on addressing Cyber Bullying through 'Operation Polite' across Town and Village Schools. NPT have also attended Parent Evenings to raise the security awareness on Social Media Sites. In addition to this NPT have given talks to more vulnerable groups to raise awareness on Internet Scams and have been involved with Senior School producing a cybercrime music 'rapp'. We have also had the opportunity to work alongside the School Youth Engagement Officers within Wiltshire Police who have been delivering topics around sexting and safeguarding children and exploitation. NPT have also been working alongside Melksham Young People and the LYN to come up with a package to deliver to the elderly. It cannot be confirmed exactly what impact this has had in reducing cybercrime but it can demonstrate how victims of crime have become more aware by reports made to the police and National Action Fraud. Cyber crime will continue to be a priority for Wiltshire Police as part of the Force Control Strategy.

NPT –New Priority

The new NPT Priority will be targeting "HIGH RISK OFFENDERS" working alongside SWITCH (Integrated Offender Management). Currently Melksham have 3 individuals who are persistent offenders and have a significant impact on our community and are a drain on resources so our aim will be to build intelligence and secure arrests and custodial sentences. We will also target individuals

working in Dangerous Drug Networks who exploit young people and will target organised crime groups who prey on elderly around retail outlets. Our aim is to protect, deter and detect criminality and make Melksham Community a safe place to be for all.

3. Wiltshire Police Control strategy



Cyber Crime

A reminder for everyone, as an individual or part of a group, company or organisation;

- anyone of any age or background can become a victim of cyber crime at any time and by various means, not just online

- follow simple online security steps to reduce the risk of falling victim & make it difficult for a criminal to access your personal information and your money,
- 'Think before you click or confirm'
 - do not click on any unsolicited links or attachments,
 - do not provide your personal details, ID/usernames, bank account or credit card details over the phone.

To find out more visit Wiltshire Police website or GetSafeOnline - www.getsafeonline.org.

Or for advice and to report an incident of fraud, scams or cybercrime, visit Action Fraud website www.actionfraud.police.uk or Tel: 0300 123 2040.

Get Safe On Line Campaign will be running between 18th-24th July, Melksham NPT will hold a number of awareness sessions times, date and venue will be communicated via our NPT Facebook Page and Community Messaging.

The most recent incident in Melksham involved a vulnerable person duped out of £47,000 via on-line scams over a succession of request from abroad. With the police intervention the victim has been compensated through the banks for some of the monies but the rest lies with calculated organised criminals overseas.

High Risk Victims

The New Missing and Absent data base that was introduced a few months ago has been working well with greater transparency and accessibility for officers. There have been 22 reported missing/absent reports in Melksham over the last 2 months. With this new tool in place it has allowed officers on the ground to work more effectively in locating individuals who have been reported as missing or absent without them being subjected to significant harm. These reported incidents have reduced by an average of 25% in Melksham since the closure of a Children's Residential Home.

Modern Slavery and Human Trafficking within Wiltshire exists in numerous forms. It is easily seen in local nails bars where the staff are predominantly Vietnamese. Brothels and Car wash enterprises are staffed by Eastern Europeans. A dedicated team known as Human Exploitation and Emerging Threats Team with the Wiltshire Intelligence Unit monitors these addresses, conducting welfare visits with staff where appropriate. Visits often involve partner agencies such as Immigration and Council staff. The police have not recovered any such victims from within the Melksham area however the HEET Team will continue to police and visit high risk businesses that are of an interest in safeguarding potential victims.

Domestic Abuse

Domestic Violence can take place anywhere and anytime however, members of certain minority groups are less likely to report it in fear of reprisals and male victims are even less likely to report. The Wiltshire Domestic Abuse Investigation Team specialise in safeguarding medium and high risk victims. The team work closely with domestic outreach agencies such as Splitz and Swindon Women's Aid. Wiltshire Police receive a large number of 'Right to know' applications from professionals around concerns that a victim may be in a relationship with a serial perpetrator of domestic abuse. (A serial perpetrator is one who has committed domestic abuse on more than one partner or family member) We also receive 'right to Ask' applications from people in relationships or concerned family members around a perpetrators background. This is coordinated by a dedicated administrator; these applications are all centered around the Clair's Law. DAIT staff also represent the Police at Court for Domestic Violence Protection Orders. Wiltshire Police are doing well at gathering and securing the evidence for these to be granted compared to other forces. These tools are fundamental in safeguarding victims of domestic abuse in our community and dealing with perpetrators effectively.

High Risk Offenders

Melksham NPT regularly attends Multi-Agency Public Protection Meetings to discuss individuals who may migrate out of other Force/Local areas and move into the Melksham Community. At this present time we do not have any such individuals due to the close working relationship with our partners and addressing community and victim concerns.

Persistent Offenders who fall under the scope of SWITCH (Integrated Offender Management) impact hugely on resources not just across the police but also our Partner Agencies. Currently across the Force there are 36 Red SWITCH Offenders and 30 Amber SWITCH Offenders. Melksham have 3 individuals who are monitored by NPT with regular home visits, building Intelligence around acquisitive crime and generally make our presence known that these individuals are under the spotlight to deter offending.

Social culture around drugs has change immensely over the years, peer pressure and recreational drug use is part of the norm for many young persons. This in itself poses health and safety risks along with the criminality. Recently NPT arrested three young persons concerned in the supply of Class B drugs and suspected of dealing to local school children. They are currently on police bail however, the concerns are that these individuals are being exploited themselves through drug net working groups at a higher level and therefore it is important that these particular groups are identified and dealt with robustly to safeguard vulnerable individuals and capture evidence to secure prosecutions, forfeitures of drugs and investigations around Proceeds of Crime. NPT have also executed a drug warrant locally which resulted in a successful conviction in Court.

Nick Mawson
Sector Inspector,
Devizes Melksham Pewsey Marlborough

Update for Melksham Area Board

Name of Parish/Town Council	Melksham Town Council
Date of Area Board Meeting	15 June 2016

Headlines/Key successes

Governance

At its Annual Council meeting on 9 May 2016 Councillor Terri Welch was re-elected Mayor and Councillor Pam Wiltshire re-elected Deputy Mayor for the ensuing year.

Councillor Andy Hinchcliffe was re-elected Town Council representative on the Area Board for the ensuing year.

Projects

Town Council Grants

The 2016 Town Council grant round will be open shortly. Any group who wishes to apply for a grant please contact Miriam Zaccarelli at the Town Hall: miriam@melkshamtown.co.uk or 01225 704187 or download an application form from the Town Council website: www.melkshamtown.co.uk

Melksham in Bloom

Judging for Melksham in Bloom will take place on Thursday, 14 July.

The competition last year saw over 39 entries from local residents as well as local businesses, schools and residential retirement homes. The competition is open to residents and businesses in Melksham and Melksham Without.

Leekes and Whitehall Garden Centre have kindly agreed to sponsor the event again this year.

Please contact Lorraine McRandle at the Town Hall for further information: lorraine.mcrandle@melkshamtown.co.uk or download an application form from the Town Council website: www.melkshamtown.co.uk

Update for Melksham Area Board

South West in Bloom

A team of volunteers are helping put together Melksham's entry into the South West in Bloom competition.

Judging takes place on 12 July. As well as being taken around a selected route, judges will also be judging individual entries around the town and surrounding area. Both The Bear and The Golden Fleece have been recognised for their outstanding floral displays in the 'Best Pub Floral Display' category of the competition in previous years.

Melksham will find out how well it has done at the South West in Bloom presentation in Taunton on 6 October.

Forthcoming events/Diary dates

- 16 July – Party in the Park
- 23 July – Carnival

Signed: Steve Gray, Town Clerk

Date: 2 June 2016

Report to	Melksham Area Board
Date of Meeting	15/06/2016
Title of Report	Community Area Grant funding

Area Board Grants Budget			
Opening balance 2016/17	Spend to date	Current balance	Balance if all grants are agreed in June 2016
£49,655.70	£12,260.00	£37,395.70	£26,625.30

Purpose of the report:

To consider the applications for funding listed below

Applicant	Amount requested
Applicant: Bowerhill Village Hall Trust Project Title: Bowerhill Village Hall projector and sound system View full application	£1326.00
Applicant: Riverside Club Project Title: Renewal of heating system at Riverside Club View full application	£2600.00
Applicant: The Wiltshire School of Gymnastics Project Title: Wiltshire School of Gymnastics Training Aids and Vinyl Flooring View full application	£2929.00
Applicant: Devizes and District Opportunity Centre Project Title: Outdoor play shelter View full application	£1500.00
Applicant: Seend Lye Recreation Field Project Title: Seend Lye Field Play Equipment View full application	£750.00

Applicant: GOLDEN FLEECE CRICKET CLUB Project Title: GFCC OUTDOOR SEATING AREA View full application	£500.00
Applicant: Wiltshire Mind Project Title: Wiltshire Mind New Laptop	£300.00
Applicant: MELKSHAM SKILLS CENTRE Project Title: MELKSHAM SKILLS CENTRE SAFE PLAY View full application	£865.40

1. Background

Area Boards have authority to approve Area Grants under powers delegated to them. Under the Scheme of Delegation Area Boards must adhere to the [Area Board Grants Guidance](#)

[The funding criteria and application forms](#) are available on the council's website.

2. Main Considerations

2.1. Councillors will need to be satisfied that funding awarded in the 2015/2016 year is made to projects that can realistically proceed within a year of it being awarded.

2.2. Councillors must ensure that the distribution of funding is in accordance with the Scheme of Delegation to Area Boards.

2.3. Councillors will need to be satisfied that the applications meet the Community Area Board grants criteria.

3. Environmental & Community Implications

Grant Funding will contribute to the continuance and/or improvement of cultural, social and community activity and wellbeing in the community area, the extent of which will be dependent upon the individual project.

4. Financial Implications

Financial provision had been made to cover this expenditure.

5. Legal Implications

There are no specific legal implications related to this report.

6. Human Resources Implications

There are no specific human resources implications related to this report.

7. Equality and Inclusion Implications

Community Area Boards must fully consider the equality impacts of their decisions in order to meet the Council's Public Sector Equality Duty.

Community Area Grants will give local community and voluntary groups, Town and Parish Council's equal opportunity to receive funding towards community based projects and schemes, where they meet the funding criteria.

8. Safeguarding Implications

The Area Board has ensured that the necessary policies and procedures are in place to safeguard children, young people and vulnerable adults.

9. Applications for consideration

Application ID	Applicant	Project Proposal	Requested
1764	Bowerhill Residents Action Group	Bowerhill Village Hall projector and sound system	£1326.00
<p>Project Description: Bowerhill Village Hall Trust is applying for an area board grant towards the costs of a projector screen and speakers to create an interactive display system. This will bring the Village Hall up to date as many users require this facility to mount interactive displays. Our current user groups regularly have speakers who would like to illustrate their talks with pictures and sounds such as the PHAB Group Ladies Group and the Craft Groups. The Village Hall Trust has been approached by Further Education Classes who will use the Hall if these facilities are in place. Also we can advertise the Hall as being suitable for local businesses from the Industrial Estate for presentations and meetings. Included is an induction loop to enable people with hearing difficulties to fully enjoy an event. If these facilities are not introduced the Hall will lose bookings to other halls who already have these facilities.</p> <p>Input from Community Engagement Manager: The grant application meets the 2016/17 grants criteria</p> <p>Proposal That the Area Board determines the application.</p>			

Application ID	Applicant	Project Proposal	Requested
1911	Riverside Club	Renewal of heating system at Riverside Club	£2600.00
<p>Project Description: The heating system at the Riverside Club is now 45 years old and is very inefficient and expensive to maintain. Spare parts are also very difficult to obtain. The Riverside Club is home to 14 different groups including the luncheon clubs which does approximately 70 meals a week.</p> <p>Input from Community Engagement Manager: The grant application meets the 2016/17 grants criteria</p> <p>Proposal That the Area Board determines the application.</p>			

Application ID	Applicant	Project Proposal	Requested
1807	The Wiltshire School of Gymnastics	Wiltshire School of Gymnastics Training Aids and Vinyl Flooring	£2929.00
<p>Project Description: We are in the process of updating and adding to our gym equipment after our extension work has greatly increased our membership. We require funding for some new spotting and vaulting blocks. We also need to replace our flooring in the public cafe area and viewing gallery with new - high traffic vinyl flooring which will make it safer and easier maintain during our day to day activities and when we host county regional and national competitions throughout the year.</p> <p>Input from Community Engagement Manager: The grant application meets the 2016/17 grants criteria</p> <p>Proposal That the Area Board determines the application.</p>			

Application ID	Applicant	Project Proposal	Requested
1936	Devizes and District Opportunity Centre	Outdoor play shelter	£1500.00
<p>Project Description: The covered outdoor play space will be suitable for children aged from birth to 5yrs with a wide variety of disabilities learning difficulties and complex health conditions which would enable our member children to access a range of physical and learning activities out in the fresh air whilst being protected from some of the elements eg. direct sunlight or rain which might otherwise prove detrimental to their wellbeing.</p> <p>Input from Community Engagement Manager: The grant application meets the 2016/17 grants criteria</p> <p>Proposal That the Area Board determines the application.</p>			

Application ID	Applicant	Project Proposal	Requested
1869	Seend Lye Recreation Field	Seend Lye Field Play Equipment	£750.00
<p>Project Description: The current wooden play equipment designed for children under 12 years old has is nearing the end of its life and a September 2015 RoSPA inspection awarded the playspace and equipment an overall risk rating of high. Funds are required for interim repair to reduce risk.</p> <p>Input from Community Engagement Manager: The grant application meets the 2016/17 grants criteria</p>			

Proposal That the Area Board determines the application.			
Application ID	Applicant	Project Proposal	Requested
1879	GOLDEN FLEECE CRICKET CLUB	GFCC OUTDOOR SEATING AREA	£500.00
Project Description: At the Golden Fleece Cricket Club a social cricket club based in Whitley Melksham we wish to provide a seating and BBQ area in order to assist with the sustainability of the club. When not in use by the cricket club this would make a useful addition to the area as the ground is on a public right of way and would be able to be used by walkers and local dog owners.			
Input from Community Engagement Manager: The grant application meets the 2016/17 grants criteria			
Proposal That the Area Board determines the application.			

Application ID	Applicant	Project Proposal	Requested
1903	MELKSHAM SKILLS CENTRE	MELKSHAM SKILLS CENTRE SAFE PLAY	£865.40
Project Description: TO PROVIDE AN OUTSIDE SAFE PLAY AREA FOR A VOLUNTARY COMMUNITY MOTHER AND TODDLER GROUP FOR THE LOCAL COMMUNITY. WE DO NOT CHARGE THIS GROUP AS IT IS AN IMPERATIVE PART OF THE COMMUNITY FOR SOCIAL INCLUSION AND A SUPPORT NETWORK FOR SINGLE PARENTS AND THOSE WITH YOUNG CHILDREN. THE AREA WILL ALSO PROVIDE AN OUTSIDE SEATING AREA FOR THE REST OF THE COMMUNITY GROUPS THAT CURRENTLY HIRE THE HALL WHICH INCLUDE PEOPLE WITH DIFFICULTIES AND DISABILITIES WELL-BEING GROUPS SOCIAL CLUBS ENVIRONMENTALCOMMUNITY PROJECTS FOR ALL AGES.			
Input from Community Engagement Manager: The grant application meets the 2016/17 grants criteria			
Proposal That the Area Board determines the application.			

Application ID	Applicant	Project Proposal	Requested
1877	Wiltshire Mind	New Laptop	£300.00
Project Description: Wiltshire Mind is a local mental health charity providing valuable services in the local community. We require funds for a new laptop for our recently appointed Counselling Manager in Melksham. The role of the Counselling Manager is to			

coordinate manage and lead a safe professional and accessible face to face counselling service. The proposed laptop will be a Lenovo G50 15.6 inch screen with Windows 10.

Input from Community Engagement Manager:

The grant application meets the 2016/17 grants criteria

Proposal

That the Area Board determines the application.

Application ID	Applicant	Project Proposal	Requested
1903	MELKSHAM SKILLS CENTRE	MELKSHAM SKILLS CENTRE SAFE PLAY	£865.40

Project Description:

TO PROVIDE AN OUTSIDE SAFE PLAY AREA FOR A VOLUNTARY COMMUNITY MOTHER AND TODDLER GROUP FOR THE LOCAL COMMUNITY. WE DO NOT CHARGE THIS GROUP AS IT IS AN IMPERATIVE PART OF THE COMMUNITY FOR SOCIAL INCLUSION AND A SUPPORT NETWORK FOR SINGLE PARENTS AND THOSE WITH YOUNG CHILDREN. THE AREA WILL ALSO PROVIDE AN OUTSIDE SEATING AREA FOR THE REST OF THE COMMUNITY GROUPS THAT CURRENTLY HIRE THE HALL WHICH INCLUDE PEOPLE WITH DIFFICULTIES AND DISABILITIES WELL-BEING GROUPS SOCIAL CLUBS ENVIRONMENTALCOMMUNITY PROJECTS FOR ALL AGES.

Input from Community Engagement Manager:

The grant application meets the 2016/17 grants criteria

Proposal

That the Area Board determines the application.

No unpublished documents have been relied upon in the preparation of this report

Report Author:

Rhys Schell

Community Engagement Manager

01225 716752

Rhys.Schell@wiltshire.gov.uk

Grant Applications for Melksham on 15/06/2016

ID	Grant Type	Project Title	Applicant	Amount Required
1764	Community Area Grant	Bowerhill Village Hall projector and sound system	Bowerhill Village Hall Trust	£1326.00
1911	Community Area Grant	Renewal of heating system at Riverside Club	Riverside Club	£2600.00
1807	Community Area Grant	Wiltshire School of Gymnastics Training Aids and Vinyl Flooring	The Wiltshire School of Gymnastics	£2929.00
1936	Community Area Grant	Outdoor play shelter	Devizes and District Opportunity Centre	£1500.00
1879	Community Area Grant	GFCC OUTDOOR SEATING AREA	GOLDEN FLEECE CRICKET CLUB	£500.00
1903	Community Area Grant	MELKSHAM SKILLS CENTRE SAFE PLAY	MELKSHAM SKILLS CENTRE	£865.40
1877	Community Area Grant	New Laptop	Wiltshire Mind	£300.00
1869	Community Area Grant	Seend Lye Field Play Equipment	Seend Lye Recreation Field	£750.00

ID	Grant Type	Project Title	Applicant	Amount Required
1764	Community Area Grant	Bowerhill Village Hall projector and sound system	Bowerhill Village Hall Trust	£1326.00
<p>Submitted: 09/02/2016 16:15:18</p> <p>ID: 1764</p> <p>Current Status: Application Appraisal</p> <p>To be considered at this meeting: tbc contact Community Area Manager</p> <p>1. Which type of grant are you applying for? Community Area Grant</p> <p>2. Amount of funding required? £501 - £5000</p> <p>3. Are you applying on behalf of a Parish Council? No</p>				

4. If yes, please state why this project cannot be funded from the Parish Precept

5. Project title?

Bowerhill Village Hall projector and sound system

6. Project summary:

Bowerhill Village Hall Trust is applying for an area board grant towards the costs of a projector screen and speakers to create an interactive display system. This will bring the Village Hall up to date as many users require this facility to mount interactive displays. Our current user groups regularly have speakers who would like to illustrate their talks with pictures and sounds such as the PHAB Group Ladies Group and the Craft Groups. The Village Hall Trust has been approached by Further Education Classes who will use the Hall if these facilities are in place. Also we can advertise the Hall as being suitable for local businesses from the Industrial Estate for presentations and meetings. Included is an induction loop to enable people with hearing difficulties to fully enjoy an event. If these facilities are not introduced the Hall will lose bookings to other halls who already have these facilities.

7. Which Area Board are you applying to?

Melksham

Electoral Division

8. What is the Post Code of where the project is taking place?

SN12 6SN

9. Please tell us which theme(s) your project supports:

Children & Young People

Arts, crafts and culture

Economy, enterprise and jobs

Festivals, pageants, fetes and fayres

Health, lifestyle and wellbeing

Heritage, history and architecture

Sport, play and recreation

If Other (please specify)

10. Finance:

10a. Your Organisation's Finance:

Your latest accounts:

10/2015

Total Income:

£10634.20

Total Expenditure:

£10078.00

Surplus/Deficit for the year:

£556.00

Free reserves currently held:

(money not committed to other projects/operating costs)

£9648.00

Why can't you fund this project from your reserves:

We are funding half of the cost but the rest of the reserves are for the general upkeep of the Hall

We are a small community group and do not have annual accounts or it is our first year:

10b. Project Finance:

Total Project cost		£2652.00		
Total required from Area Board		£1326.00		
Expenditure		Income	Tick if income	
(Itemised	£	(Itemised	confirmed	£
expenditure)		income)		
Projector	560.00	Reserves	yes	621.50
Screen	325.00	Reserves	yes	511.50
Cabling	125.00	Reserves	yes	181.50
Speakers	40.00	Reserves	yes	11.50
Installation	555.00			
Faceplate	295.00			
Fused Spur	145.00			
Induction Loop	125.00			
Carriage	40.00			
VAT	442.00			
Total	£2652			£1326

11. Have you or do you intend to apply for a grant from another area board within this financial year?

No

12. If so, which Area Boards?

Melksham

13. Please tell us WHO will benefit and HOW they will benefit from your project benefit your local community?

If the Hall can attract new users by offering this system then we will not have to raise hiring rates for our current regular users. Many of our regular users are local groups for whom even a small increase in charges could cause them to have to close. The Village Hall Trust wants to encourage more local groups to use the Hall and if we can keep our charges low then it is hoped that more groups will use the Hall.

14. How will you monitor this?

We will check how many more bookings the Hall gets when the new facility is installed.

15. If your project will continue after the Wiltshire Council funding runs out, how will you continue to fund it?

It will be funded from our own funds.

16. Is there anything else you think we should know about the project?

17. DECLARATION

Supporting information - Please confirm that the following documents will be available to inspect upon request:

Quotes:

yes I will make available on request 1 quote for individual project costs over £500 & 2 quotes for project costs over £1000 (Individual project costs are listed in the expenditure section above)

Accounts:

yes I will make available on request the organisation's **latest accounts**

Constitution:

yes I will make available on request the organisation's Constitution/Terms of Reference etc.

Policies and procedures:

yes I will make available on request the necessary and relevant policies and procedures such as Child Protection, Safeguarding Adults, Public Liability Insurance, Access audit, Health & Safety and Environmental assessments.

Other supporting information (Tick where appropriate, for some project these will not be applicable):

And finally...

yes The information on this form is correct, that any award received will be spent on the activities specified.

1911	Community Area Grant	Renewal of heating system at Riverside Club	Riverside Club	£2600.00
------	----------------------	---	----------------	----------

Submitted: 25/04/2016 13:38:46

ID: 1911

Current Status: Application Appraisal

To be considered at this meeting:

tbc contact Community Area Manager

1. Which type of grant are you applying for?

Community Area Grant

2. Amount of funding required?

£501 - £5000

3. Are you applying on behalf of a Parish Council?

No

4. If yes, please state why this project cannot be funded from the Parish Precept

5. Project title?

Renewal of heating system at Riverside Club

6. Project summary:

The heating system at the Riverside Club is now 45 years old and is very inefficient and expensive to maintain. Spare parts are also very difficult to obtain. The Riverside Club is home to 14 different groups including the luncheon clubs which does approximately 70 meals a week.

7. Which Area Board are you applying to?

Melksham

Electoral Division

8. What is the Post Code of where the project is taking place?

SN12 6LP

9. Please tell us which theme(s) your project supports:

Children & Young People

Countryside, environment and nature

Inclusion, diversity and community spirit

Sport, play and recreation

If Other (please specify)

10. Finance:

10a. Your Organisation's Finance:

Your latest accounts:

04/2016

Total Income:

£48370.51

Total Expenditure:

£47194.63

Surplus/Deficit for the year:

£-1175.88

Free reserves currently held:

(money not committed to other projects/operating costs)

£4707.91

Why can't you fund this project from your reserves:

.

We are a small community group and do not have annual accounts or it is our first year:

10b. Project Finance:

Total Project cost		£5200.00		
Total required from Area Board		£2600.00		
Expenditure (Itemised expenditure)	£	Income (Itemised income)	Tick if income confirmed	£
Complete heating system and installation	5200.00	Community First	yes	2600.00
Total	£5200			£2600

11. Have you or do you intend to apply for a grant from another area board within this financial year?

No

12. If so, which Area Boards?

Melksham

13. Please tell us WHO will benefit and HOW they will benefit from your project benefit your local community?

The Riverside Club provides a safe and friendly environment for its users. An improved heating system will offer users a more pleasant atmosphere and will also reduce the running costs for the building.

14. How will you monitor this?

The work will be completed imminently and users will benefit.

15. If your project will continue after the Wiltshire Council funding runs out, how will you continue to fund it?

NA

16. Is there anything else you think we should know about the project?

NA

17. DECLARATION

Supporting information - Please confirm that the following documents will be available to inspect upon request:

Quotes:

yes I will make available on request 1 quote for individual project costs over £500 & 2 quotes for project costs over £1000 (Individual project costs are listed in the expenditure section above)

Accounts:

yes I will make available on request the organisation's **latest accounts**

Constitution:

yes I will make available on request the organisation's Constitution/Terms of Reference etc.

Policies and procedures:

yes I will make available on request the necessary and relevant policies and procedures such as Child Protection, Safeguarding Adults, Public Liability Insurance, Access audit, Health & Safety and Environmental assessments.

Other supporting information (Tick where appropriate, for some project these will not be applicable):

yes I will make available on request evidence of ownership of buildings/land

And finally...

yes The information on this form is correct, that any award received will be spent on the activities specified.

1807	Community Area Grant	Wiltshire School of Gymnastics Training Aids and Vinyl Flooring	The Wiltshire School of Gymnastics	£2929.00
------	----------------------	---	------------------------------------	----------

Submitted: 26/02/2016 14:14:57

ID: 1807

Current Status: Application Appraisal

To be considered at this meeting:

tbc contact Community Area Manager

1. Which type of grant are you applying for?

Community Area Grant

2. Amount of funding required?

£501 - £5000

3. Are you applying on behalf of a Parish Council?

No

4. If yes, please state why this project cannot be funded from the Parish Precept

5. Project title?

Wiltshire School of Gymnastics Training Aids and Vinyl Flooring

6. Project summary:

We are in the process of updating and adding to our gym equipment after our extension work has greatly increased our membership. We require funding for some new spotting and vaulting blocks. We also need to replace our flooring in the public cafe area and viewing gallery with new - high traffic vinyl flooring which will make it safer and easier maintain during our day to day activities and when we host county regional and national competitions throughout the year.

7. Which Area Board are you applying to?

Melksham

Electoral Division**8. What is the Post Code of where the project is taking place?**

SN12 6SP

9. Please tell us which theme(s) your project supports:

Children & Young People

If Other (please specify)

10. Finance:**10a. Your Organisation's Finance:****Your latest accounts:**

11/2015

Total Income:

£866223.00

Total Expenditure:

£474525.00

Surplus/Deficit for the year:

£391698.00

Free reserves currently held:

(money not committed to other projects/operating costs)

£147000.00

Why can't you fund this project from your reserves:

244000.00 was a donation from the Ltd. Company. No real cash changed hands as it was a donation of assets. We have recently finished building works on a large extension and still owe the building contractor a substantial amount which is due this September. We are also paying a 68k loan for a Biomass heating system that was installed late 2014 and we still have

essential works to our car-park that are scheduled to be completed in May.

We are a small community group and do not have annual accounts or it is our first year:

10b. Project Finance:

Total Project cost		£5858.00		
Total required from Area Board		£2929.00		
Expenditure (Itemised expenditure)	£	Income (Itemised income)	Tick if income confirmed	£
small vaulting blocks	700.00	our reserves	yes	858.00
large vaulting blocks	1200.00			
vinyl flooring	3958.00			
Total	£5858			£858

11. Have you or do you intend to apply for a grant from another area board within this financial year?

Yes

12. If so, which Area Boards?

Corsham

13. Please tell us WHO will benefit and HOW they will benefit from your project benefit your local community?

The Wiltshire School of Gymnastics is a gymnastics and trampolining educational charity serving Wiltshire and the surrounding areas. We are affiliated to the British Gymnastics the Wiltshire Amateur Gymnastics Association and have the support of the South West Sports Council. Under the leadership of our Management Team our dedicated and highly qualified staff provide high-quality coaching for children teenagers and adults across all levels of the sport from pre-school through recreational to gymnasts who compete at county regional and national competitions. A number of our most talented gymnasts have represented Great Britain internationally. To this end we are in need of some new spotting vaulting blocks ideal for coach spotting on bars beam and other apparatus and are also firm enough to vault over. They are also great for Park our Freestyle FreeG - which is a rapidly growing activity we now offer in order to give more children continued involvement in the sport. WSG has also historically been host to a variety of national competitions. With gymnastics being an ever-growing sport attendance to these national competitions has inevitably increased meaning a dwindling number of clubs having the capability to be a venue for such events. Due to our recent extension project our increased capacity will also enable us to bring more national gymnastic competitions to Wiltshire. With increased traffic in the public areas of the Gym we now need to replace our flooring in the public cafe area and viewing gallery with new - high traffic vinyl flooring which will make it safer and easier maintain during our day to day activities and when we host county regional and national competitions throughout the year.

14. How will you monitor this?

We have gym-wide monitoring on all our classes letting us know how many children attend each of our classes at all levels. We also have an extensive calendar of events throughout the year with a strict door policy for attendance. This calendar becomes fuller as we become a well-established venue for many competitions.

15. If your project will continue after the Wiltshire Council funding runs out, how will you continue to fund it?

We have an ongoing project of fundraising led by our board of Trustees.

16. Is there anything else you think we should know about the project?

17. DECLARATION

Supporting information - Please confirm that the following documents will be available to inspect upon request:

Quotes:

yes I will make available on request 1 quote for individual project costs over £500 & 2 quotes for project costs over £1000 (Individual project costs are listed in the expenditure section above)

Accounts:

yes I will make available on request the organisation's **latest accounts**

Constitution:

yes I will make available on request the organisation's Constitution/Terms of Reference etc.

Policies and procedures:

yes I will make available on request the necessary and relevant policies and procedures such as Child Protection, Safeguarding Adults, Public Liability Insurance, Access audit, Health & Safety and Environmental assessments.

Other supporting information (Tick where appropriate, for some project these will not be applicable):

yes I will make available on request evidence of ownership of buildings/land

yes I will make available on request any other form of licence or approval for this project has been received prior to submission of this grant application.

And finally...

yes The information on this form is correct, that any award received will be spent on the activities specified.

1936	Community Area Grant	Outdoor play shelter	Devizes and District Opportunity Centre	£1500.00
------	----------------------	----------------------	---	----------

Submitted: 05/05/2016 11:07:06

ID: 1936

Current Status: Application Appraisal

To be considered at this meeting:

tbc contact Community Area Manager

1. Which type of grant are you applying for?

Community Area Grant

2. Amount of funding required?

£501 - £5000

3. Are you applying on behalf of a Parish Council?

No

4. If yes, please state why this project cannot be funded from the Parish Precept

5. Project title?

Outdoor play shelter

6. Project summary:

The covered outdoor play space will be suitable for children aged from birth to 5yrs with a wide variety of disabilities learning difficulties and complex health conditions which would enable our member children to access a range of physical and learning activities out in the fresh air whilst being protected from some of the elements e.g. direct sunlight or rain which might otherwise prove detrimental to their wellbeing.

7. Which Area Board are you applying to?

Melksham

Electoral Division

8. What is the Post Code of where the project is taking place?

SN10 2AJ

9. Please tell us which theme(s) your project supports:

Children & Young People

Countryside, environment and nature

Health, lifestyle and wellbeing

Inclusion, diversity and community spirit

Sport, play and recreation

If Other (please specify)

10. Finance:

10a. Your Organisation's Finance:

Your latest accounts:

03/2015

Total Income:

£143213.00

Total Expenditure:

£143000.00

Surplus/Deficit for the year:

£213.00

Free reserves currently held:**(money not committed to other projects/operating costs)**

£159304.00

Why can't you fund this project from your reserves:

Of this 30000 is ring fenced as Give us a Chance Fund and our constitution states we must keep an absolute minimum of 6 months running costs ring fenced.

We are a small community group and do not have annual accounts or it is our first year:

10b. Project Finance:

Total Project cost		£14168.47		
Total required from Area Board		£1500.00		
Expenditure		Income	Tick if income	
(Itemised	£	(Itemised	confirmed	£
expenditure)		income)		
Prelims	1333.84	Our Reserves	yes	9168.47
Foundations	1450.00			
Structure	2984.00			
Roof and Wall				
Coverings	2550.82			
Paving	3488.40			
Non				
Recoverable	2361.41			
VAT				
Total	£14168.47			£9168.47

11. Have you or do you intend to apply for a grant from another area board within this financial year?

Yes

12. If so, which Area Boards?

Devizes

Melksham

13. Please tell us WHO will benefit and HOW they will benefit from your project benefit your local community?

Devizes District Opportunity Centre is one of Wiltshire County's four Designated Early Years District Specialist Centres. We provide Specialist early year's education and therapeutic care to very young children with disabilities learning difficulties and complex life threatening health conditions. Our catchment area covers the towns of Devizes Marlborough Pewsey Tidworth Melksham of which we take almost equal number of children to Devizes and their surrounding villages. Working through a multi-agency team around the child approach working in partnership with health and education professionals we offer a comprehensive package of developmental support designed to promote children's progress and maximise their life chances. Each child has an individual developmental program specifically targeted to develop vital life skills. Play activities devised to promote Language communication, knowledge and understanding in a more exciting and enjoyable way. It will enable us to provide outdoor experiences for some of our more vulnerable children who would otherwise be excluded due to their conditions. Children with Autistic Spectrum disorders who have sensory integration difficulties will also be able to benefit from new activities designed to provide them with much needed multi-sensory stimulation. All of our member children will undoubtedly benefit from increased access to the outdoor play and fun. Although we are based in the Devizes area where we are making our main grant application almost half of our children are from the Melksham area and therefore we provide a significant amount of support to families in this district. For families who are not able to afford to travel to our centre from Melksham we provide a volunteer transport service at significant cost to our Centre so that we can continue to provide this vital service and care. We hope that our Outdoor Play area will be able to give many children from Melksham the opportunity to enjoy external play fresh air and a range of activities to help improve their learning.

14. How will you monitor this?

The success of this project will be monitored through our existing systems of monitoring and evaluating each child's progress on a six weekly basis. Written reports are kept documenting progress against planned outcomes. Further monitoring will occur through staff team meetings discussion with parents and involved professional therapists

15. If your project will continue after the Wiltshire Council funding runs out, how will you continue to fund it?

There are no real running costs once installed above and beyond the usual maintenance and housekeeping we already undertake

16. Is there anything else you think we should know about the project?

na

17. DECLARATION

Supporting information - Please confirm that the following documents will be available to inspect upon request:

Quotes:

yes I will make available on request 1 quote for individual project costs over £500 & 2 quotes for project costs over £1000 (Individual project costs are listed in the expenditure section above)

Accounts:

yes I will make available on request the organisation's **latest accounts**

Constitution:

yes I will make available on request the organisation's Constitution/Terms of Reference etc.

Policies and procedures:

yes I will make available on request the necessary and relevant policies and procedures such as Child Protection, Safeguarding Adults, Public Liability Insurance, Access audit, Health & Safety and Environmental assessments.

Other supporting information (Tick where appropriate, for some project these will not be applicable):

yes I will make available on request evidence of ownership of buildings/land

yes I will make available on request the relevant planning permission for the project.

yes I will make available on request any other form of licence or approval for this project has been received prior to submission of this grant application.

And finally...

yes The information on this form is correct, that any award received will be spent on the activities specified.

1879	Community Area Grant	GFCC OUTDOOR SEATING AREA	GOLDEN FLEECE CRICKET CLUB	£500.00
------	----------------------	---------------------------	----------------------------	---------

Submitted: 03/04/2016 09:30:06

ID: 1879

Current Status: Application Appraisal

To be considered at this meeting:

tbc contact Community Area Manager

1. Which type of grant are you applying for?

Community Area Grant

2. Amount of funding required?

£0 - £500

3. Are you applying on behalf of a Parish Council?

No

4. If yes, please state why this project cannot be funded from the Parish Precept

5. Project title?

GFCC OUTDOOR SEATING AREA

6. Project summary:

At the Golden Fleece Cricket Club a social cricket club based in Whitley Melksham we wish to provide a seating and BBQ area in order to assist with the sustainability of the club. When not in use by the cricket club this would make a useful addition to the area as the ground is on

a public right of way and would be able to be used by walkers and local dog owners.

7. Which Area Board are you applying to?

Melksham

Electoral Division

8. What is the Post Code of where the project is taking place?

SN12 8QE

9. Please tell us which theme(s) your project supports:

Health, lifestyle and wellbeing

Inclusion, diversity and community spirit

Sport, play and recreation

If Other (please specify)

10. Finance:

10a. Your Organisation's Finance:

Your latest accounts:

09/2015

Total Income:

£3354.45

Total Expenditure:

£3476.41

Surplus/Deficit for the year:

£-121.93

Free reserves currently held:

(money not committed to other projects/operating costs)

£0.00

Why can't you fund this project from your reserves:

The cost last year of running a water supply to the pavilion used up any reserves the club had available.

We are a small community group and do not have annual accounts or it is our first year:

10b. Project Finance:

Total Project cost £500.00

Total required from Area Board £500.00

Expenditure	£	Income	Tick if income
(Itemised		(Itemised	confirmed

expenditure)		income)
Levelling Ground	100.00	
Permanent BBQ	100.00	
Outdoor Seating	300.00	
Total	£500	£0

11. Have you or do you intend to apply for a grant from another area board within this financial year?

No

12. If so, which Area Boards?

Melksham

13. Please tell us WHO will benefit and HOW they will benefit from your project benefit your local community?

The seating area will be used by the groups of walkers who come through the right of way. The equipment will be treated in order to make it useable all year around. Having a safe designated area the club will be able to offer more social events such as our family fun day and this year's charity cricket match which at present we cannot put on fully.

14. How will you monitor this?

All income from the BBQ area will be fully accounted and will be used to continually grow the local club.

15. If your project will continue after the Wiltshire Council funding runs out, how will you continue to fund it?

Self-financing

16. Is there anything else you think we should know about the project?

17. DECLARATION

Supporting information - Please confirm that the following documents will be available to inspect upon request:

Quotes:

yes I will make available on request 1 quote for individual project costs over £500 & 2 quotes for project costs over £1000 (Individual project costs are listed in the expenditure section above)

Accounts:

yes I will make available on request the organisation's **latest accounts**

Constitution:

yes I will make available on request the organisation's Constitution/Terms of Reference etc.

Policies and procedures:

yes I will make available on request the necessary and relevant policies and procedures such as Child Protection, Safeguarding Adults, Public Liability Insurance, Access audit, Health & Safety and Environmental assessments.

Other supporting information (Tick where appropriate, for some project these will not be applicable):

yes I will make available on request evidence of ownership of buildings/land

And finally...

yes The information on this form is correct, that any award received will be spent on the activities specified.

1903	Community Area Grant	MELKSHAM SKILLS CENTRE SAFE PLAY	MELKSHAM SKILLS CENTRE	£865.40
------	----------------------	----------------------------------	------------------------	---------

Submitted: 18/04/2016 17:09:47

ID: 1903

Current Status: Application Appraisal

To be considered at this meeting:

tbc contact Community Area Manager

1. Which type of grant are you applying for?

Community Area Grant

2. Amount of funding required?

£0 - £500

3. Are you applying on behalf of a Parish Council?

No

4. If yes, please state why this project cannot be funded from the Parish Precept**5. Project title?**

MELKSHAM SKILLS CENTRE SAFE PLAY

6. Project summary:

TO PROVIDE AN OUTSIDE SAFE PLAY AREA FOR A VOLUNTARY COMMUNITY MOTHER AND TODDLER GROUP FOR THE LOCAL COMMUNITY. WE DO NOT CHARGE THIS GROUP AS IT IS AN IMPERATIVE PART OF THE COMMUNITY FOR SOCIAL INCLUSION AND A SUPPORT NETWORK FOR SINGLE PARENTS AND THOSE WITH YOUNG CHILDREN. THE AREA WILL ALSO PROVIDE AN OUTSIDE SEATING AREA FOR THE REST OF THE COMMUNITY GROUPS THAT CURRENTLY HIRE THE HALL WHICH INCLUDE PEOPLE WITH DIFFICULTIES AND DISABILITIES WELL-BEING GROUPS SOCIAL CLUBS ENVIRONMENTALCOMMUNITY PROJECTS FOR ALL AGES.

7. Which Area Board are you applying to?

Melksham

Electoral Division

8. What is the Post Code of where the project is taking place?

SN12 7EF

9. Please tell us which theme(s) your project supports:

Children & Young People
Arts, crafts and culture
Health, lifestyle and wellbeing
Inclusion, diversity and community spirit
Sport, play and recreation

If Other (please specify)

10. Finance:

10a. Your Organisation's Finance:

Your latest accounts:

Total Income:

£

Total Expenditure:

£

Surplus/Deficit for the year:

£

Free reserves currently held:

(money not committed to other projects/operating costs)

£

Why can't you fund this project from your reserves:

We are a small community group and do not have annual accounts or it is our first year: yes

10b. Project Finance:

Total Project cost		£865.40		
Total required from Area Board		£865.40		
Expenditure		Income		Tick if income
(Itemised	£	(Itemised		confirmed
expenditure)		income)		£
ARTIFICIAL	592.68			
GRASS				
MATERIALS	272.72			

Total **£865.4** **£0**

11. Have you or do you intend to apply for a grant from another area board within this financial year?

No

12. If so, which Area Boards?

Melksham

13. Please tell us WHO will benefit and HOW they will benefit from your project benefit your local community?

MELKSHAM AND THE SURROUNDING AREAS AS A WHOLE ESPECIALLY THE MELKSHAM FOREST AREA AS AN ACCESSIBLE VENUE FOR COMMUNITY AND SOCIAL INCLUSION. MSC PROVIDES A VENUE FOR LOCAL GROUPS TO MEET WHICH INCLUDES SOCIAL WELLBEING EDUCATIONAL ENVIRONMENTAL PLUS EMPLOYABILITY SKILLS THEREFORE THIS PROJECT WILL BENEFIT ALL

14. How will you monitor this?

ACCOUNTS

15. If your project will continue after the Wiltshire Council funding runs out, how will you continue to fund it?

through fundraising and applying for additional funding for additional areas.

16. Is there anything else you think we should know about the project?

REFURBISHMENT OF MELKSHAM SKILLS CENTRE WHICH WAS PURCHASED FORM THE CHURCH APPROX 12000 -15000

17. DECLARATION

Supporting information - Please confirm that the following documents will be available to inspect upon request:

Quotes:

yes I will make available on request 1 quote for individual project costs over £500 & 2 quotes for project costs over £1000 (Individual project costs are listed in the expenditure section above)

Constitution:

yes I will make available on request the organisation's Constitution/Terms of Reference etc.

Policies and procedures:

yes I will make available on request the necessary and relevant policies and procedures such as Child Protection, Safeguarding Adults, Public Liability Insurance, Access audit, Health & Safety and Environmental assessments.

Other supporting information (Tick where appropriate, for some project these will not be applicable):

yes I will make available on request evidence of ownership of buildings/land

And finally...

yes The information on this form is correct, that any award received will be spent on the activities specified.

1877	Community Area Grant	New Laptop	Wiltshire Mind	£300.00
------	----------------------	------------	----------------	---------

Submitted: 27/04/2016 10:47:14

ID: 1877

Current Status: Application Appraisal

To be considered at this meeting:

tbc contact Community Area Manager

1. Which type of grant are you applying for?

Community Area Grant

2. Amount of funding required?

£501 - £5000

3. Are you applying on behalf of a Parish Council?

No

4. If yes, please state why this project cannot be funded from the Parish Precept

5. Project title?

Wiltshire Mind – New Laptop

6. Project summary:

Wiltshire Mind is a local mental health charity providing valuable services in the local community. We require funds for a new laptop for our recently appointed Counselling Manager in Melksham. The role of the Counselling Manager is to coordinate manage and lead a safe professional and accessible face to face counselling service. The proposed laptop will be a Lenovo G50 15.6 inch screen with Windows 10.

7. Which Area Board are you applying to?

Melksham

Electoral Division

8. What is the Post Code of where the project is taking place?

SN12 6JY

9. Please tell us which theme(s) your project supports:

Health, lifestyle and wellbeing

Inclusion, diversity and community spirit

If Other (please specify)

10. Finance:

10a. Your Organisation's Finance:

Your latest accounts:

03/2015

Total Income:

£226985.00

Total Expenditure:

£186646.00

Surplus/Deficit for the year:

£40339.00

Free reserves currently held:

(money not committed to other projects/operating costs)

£51000.00

Why can't you fund this project from your reserves:

Our reserves are earmarked for contingency. Our current end of year accounts are being finalised but it is clear that this year we have made a loss of between £5-8000.

10b. Project Finance:

Total Project cost		£300.00		
Total required from Area Board		£300.00		
Expenditure		Income	Tick if income	
(Itemised	£	(Itemised	confirmed	£
expenditure)		income)		
Laptop	300.00	N/A		0.00
Total	£300.00			£0.00

11. Have you or do you intend to apply for a grant from another area board within this financial year?

No

12. If so, which Area Boards?

Melksham

13. Please tell us WHO will benefit and HOW they will benefit from your project benefit your local community?

The laptop will help the Counselling Manager fulfil her day to day tasks and enable her to undertake her duties. This is a new role and currently the Manager is using an old PC which is slow and has problems. To do her job properly she needs a new computer. We do not have the funds to provide this. Ultimately local residents of Melksham whom attend counselling will benefit from the project. We have helped many residents to overcome personal obstacles in their lives and to move forward. We generally see people who have not been able to gain help through the NHSCCG and are desperate to receive help. We are a real lifeline for many. Counselling helps a client understand their situation better and thus reduce confusion and a feeling of isolation and hopelessness. After counselling clients have shown an increased ability to manage daily tasks and lead fulfilling lives- people getting better chances in life and playing a fuller part in society including the returning to work or undertaking voluntary work. We want to reach people at the earliest possible stage and provide services to help those living in our local Melksham Community Area. Our project links to the Joint Strategic Alliance priorities for Melksham in particular the priority for Health and Wellbeing. The agreed priority is that Melksham urgently needs the right health resources in order to meet the growing demands of the community area.

14. How will you monitor this?

The main way of monitoring our project is by keeping records of health improvements on the computer achieved amongst our counselling clients. We also have various methods of collecting evidence both objective and subjective, that measure a range of key indicators that show our project is working and is making a difference. Key indicators include attendance records number of new client attendees levels of confidence gained and any changes levels of participation and contribution to counselling expression of the clients own views and experiences interaction levels with the counsellor reduction in isolation through friendships and activity outside counselling ability to deal with challenge and self-challenge levels of personal development and progression on trying new activities attendance at other organisations to gain support where necessary clients attending less frequently and requiring less support feedback where possible from families and friends returning to full time employment or voluntary work and improvements in physical health and wellbeing.

15. If your project will continue after the Wiltshire Council funding runs out, how will you continue to fund it?

The item to be funded will have quite a long economic life. We anticipate that further funding would not be required for a few years. When further funding is required we will approach various sources including local Trusts and Foundations.

16. Is there anything else you think we should know about the project?

NA

17. DECLARATION

Supporting information - Please confirm that the following documents will be available to inspect upon request:

Quotes:

yes I will make available on request 1 quote for individual project costs over £500 & 2 quotes for project costs over £1000 (Individual project costs are listed in the expenditure section

above)

Accounts:

yes I will make available on request the organisation's **latest accounts**

Constitution:

yes I will make available on request the organisation's Constitution/Terms of Reference etc.

Policies and procedures:

yes I will make available on request the necessary and relevant policies and procedures such as Child Protection, Safeguarding Adults, Public Liability Insurance, Access audit, Health & Safety and Environmental assessments.

Other supporting information (Tick where appropriate, for some project these will not be applicable):

yes I will make available on request evidence of ownership of buildings/land

And finally...

yes The information on this form is correct, that any award received will be spent on the activities specified.

1869	Community Area Grant	Seend Lye Field Play Equipment	Seend Lye Recreation Field	£750.00
------	----------------------	--------------------------------	----------------------------	---------

Submitted: 24/03/2016 10:17:16

ID: 1869

Current Status: Application Appraisal

To be considered at this meeting:

tbc contact Community Area Manager

1. Which type of grant are you applying for?

Community Area Grant

2. Amount of funding required?

£501 - £5000

3. Are you applying on behalf of a Parish Council?

No

4. If yes, please state why this project cannot be funded from the Parish Precept

5. Project title?

Seend Lye Field Play Equipment

6. Project summary:

The current wooden play equipment designed for children under 12 years old has is nearing the end of its life and a September 2015 RoSPA inspection awarded the playspace and

equipment an overall risk rating of high. Funds are required for interim repair to reduce risk.

7. Which Area Board are you applying to?

Melksham

Electoral Division

8. What is the Post Code of where the project is taking place?

SN12 6NS

9. Please tell us which theme(s) your project supports:

Children & Young People

Health, lifestyle and wellbeing

Inclusion, diversity and community spirit

Safer communities

Sport, play and recreation

If Other (please specify)

10. Finance:

10a. Your Organisation's Finance:

Your latest accounts:

03/2015

Total Income:

£19512.59

Total Expenditure:

£19512.59

Surplus/Deficit for the year:

£0.00

Free reserves currently held:

(money not committed to other projects/operating costs)

£0.00

Why can't you fund this project from your reserves:

Our rural parish has a well-recognised deficit in play provision for young people. The current Office of National Statistics population data for the parish of Seend shows 215 persons in the age range 0 to 17 yrs 19 of parish population. Of the 215 persons 74 6.5 of population are in the age range 10 17 yearsThe right to play is enshrined in Article 31 of the UN Convention on the Rights of the Child. The responsibility for play provision rests with Wiltshire Council and Seend Parish Council.The constitution of the Seend Lye Field Charity does not include provision and maintenance of play equipment. Despite this the charity has inherited this function as a matter of good will and community commitment. Furthermore as the current play equipment is located on the Lye Field recreational area the management committee has historically accepted a duty of care for safety inspections. Invested charitable reserves

generate income to cover the running costs of the Seend Lye Field and Irene Usher Memorial Pavilion. The reserves cannot be reduced without affecting the long term financial sustainability of the charity which has to mount significant fundraising activities on its own account each year.

We are a small community group and do not have annual accounts or it is our first year:

10b. Project Finance:

Total Project cost	£1500.00			
Total required from Area Board	£750.00			
Expenditure (Itemised £ expenditure)		Income (Itemised income)	Tick if income confirmed	£
Purchase of new equipment and repairs	1500.00	Our reserves	yes	750.00
Total	£1500			£750

11. Have you or do you intend to apply for a grant from another area board within this financial year?

No

12. If so, which Area Boards?

Melksham

13. Please tell us WHO will benefit and HOW they will benefit from your project benefit your local community?

The children of the parish of Seend and surrounding parishes will benefit from this project.

14. How will you monitor this?

The project will be managed and monitored by the Seend Lye Recreation Field committee. The play equipment will continue to be periodically inspected by RoSPA.

15. If your project will continue after the Wiltshire Council funding runs out, how will you continue to fund it?

There is a long term aim to seek greater support for play provision play space and play equipment from Seend Parish Council and Wiltshire Council. It is expected that these issues will be addressed in the health and wellbeing section of the emerging Seend Neighbourhood Plan.

16. Is there anything else you think we should know about the project?

This application does not form part of a wider project.

17. DECLARATION

Supporting information - Please confirm that the following documents will be available

to inspect upon request:

Quotes:

yes I will make available on request 1 quote for individual project costs over £500 & 2 quotes for project costs over £1000 (Individual project costs are listed in the expenditure section above)

Accounts:

yes I will make available on request the organisation's **latest accounts**

Constitution:

yes I will make available on request the organisation's Constitution/Terms of Reference etc.

Policies and procedures:

yes I will make available on request the necessary and relevant policies and procedures such as Child Protection, Safeguarding Adults, Public Liability Insurance, Access audit, Health & Safety and Environmental assessments.

Other supporting information (Tick where appropriate, for some project these will not be applicable):

yes I will make available on request evidence of ownership of buildings/land

And finally...

yes The information on this form is correct, that any award received will be spent on the activities specified.